

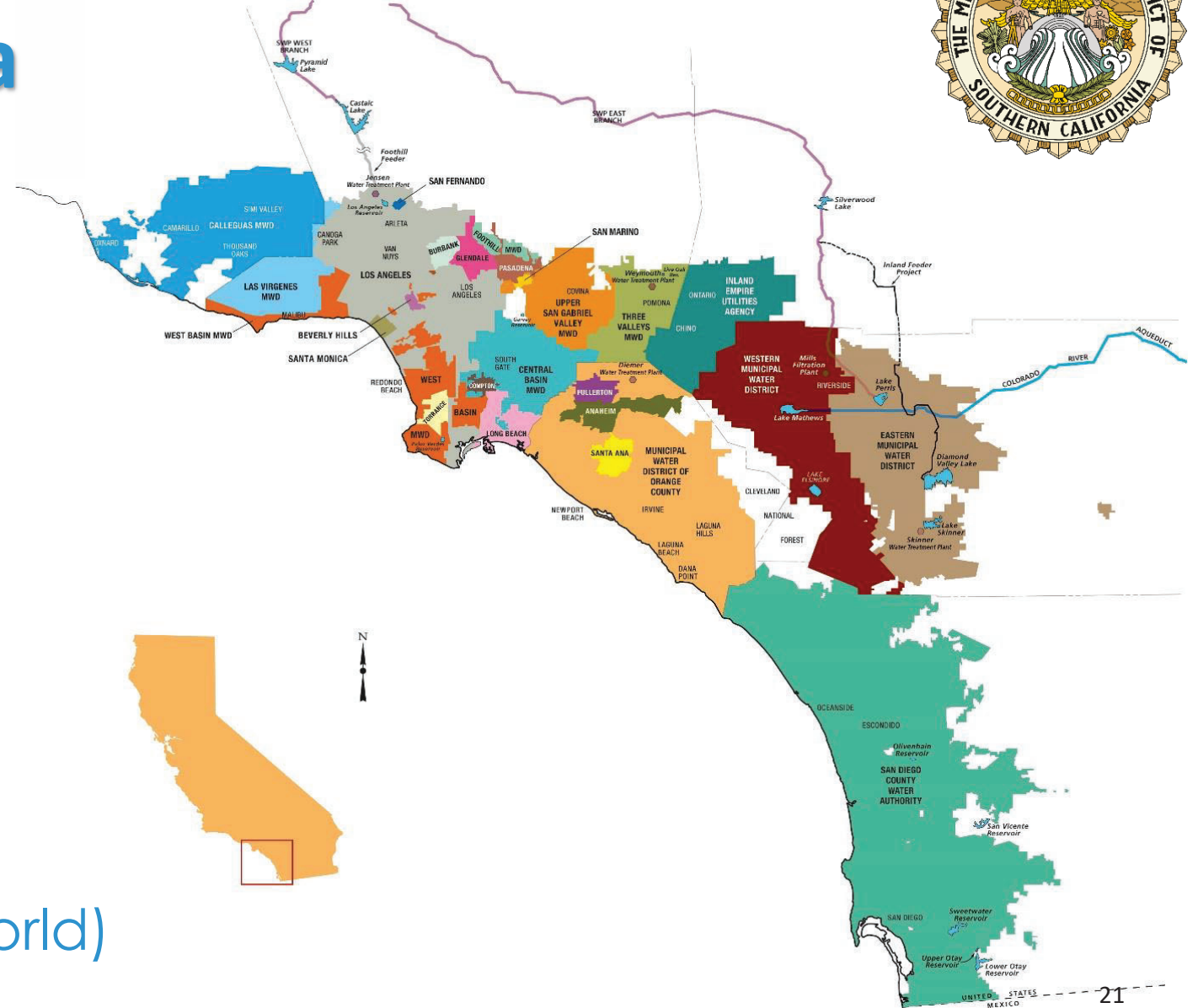
# SOUTHERN CALIFORNIA GOLF & WATER SUMMIT

August 18, 2022



# The Metropolitan Water District of Southern California

- Nation's largest wholesale water provider
- Service area:
  - 19 million people
  - 5,200 square miles
  - parts of six counties
- 26 member agencies
- Supports \$1.6 trillion regional economy (ranks 11<sup>th</sup> in the world)



# Regional Rebate Program

Krista Guerrero/ Metropolitan Water District

# Large Landscape Surveys

- No cost
- Minimum 1 acre irrigated area
- Commercial, institutional, HOAs common areas, Large Residential Landscapes
- Recommendations to improve water efficiency





# Regional Rebate Program

The screenshot shows the website's header with the SoCal WaterSmart logo, 'Commercial Rebates' text, and the bewaterwise.com logo. Navigation links include 'Rebates', 'Water Savings Incentive Program', 'Retailer Tools', 'Contractor Resources', and 'Contact Us'. A dropdown menu is open under 'Rebates', listing options like 'General Information', 'Available Rebates', 'Apply Online', 'Estimate Your Rebate', and 'Program FAQs'. A 'WATER CONSERVATION HOW-TO TIPS' section is visible on the right, along with a 'LEARN MORE' button and navigation arrows. At the bottom, two call-to-action boxes are present: 'VERIFY YOUR ELIGIBILITY & ESTIMATE YOUR REBATE' with a keyboard image, and 'SUBMIT YOUR REBATE APPLICATION!' with a stack of money image.

**SoCal WaterSmart** | Commercial Rebates | **bewaterwise.com** | English | Commercial

Home | **Rebates** | Water Savings Incentive Program | Retailer Tools | Contractor Resources | Contact Us

- General Information
- Available Rebates** | Available Rebates Overview
- Apply Online | Commercial Devices
- Estimate Your Rebate | Commercial Turf Replacement Program
- Program FAQs | On-site Retrofit Program
- Pre1994 Multi-Family Property Toilet Replacement Program
- Public Agency Turf Replacement Program
- Water Savings Incentive Program

**WATER CONSERVATION HOW-TO TIPS**

Visit [bewaterwise.com](http://bewaterwise.com) for garden inspiration, landscape classes, helpful videos and much more.

[LEARN MORE](#)

[←](#) [→](#)

**VERIFY YOUR ELIGIBILITY & ESTIMATE YOUR REBATE**

Click to verify eligibility and identify the current rebate amounts. Rebates may vary by water agency and are based on the availability of funding.

**SUBMIT YOUR REBATE APPLICATION!**

Complete and submit your application online. Various rebates are available region-wide, so apply now to secure your place!

[socalwatersmart.com](http://socalwatersmart.com)

# Commercial Rebates: Landscape

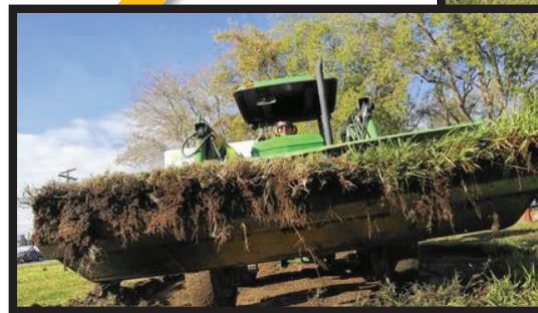
- Rotating Spray Nozzles
  - Base rebate \$2 per nozzle
- Large Rotary Nozzles
  - Base rebate \$13/set
- Weather Based Irrigation Controllers
  - Base rebate \$35/station
- Central Computer Irrigation Controller
  - Base rebate \$35/station
- Soil Moisture Sensor Systems
  - Base rebate \$35/station
- In-Stem Flow Regulators
  - Base rebate \$1 each (min 25)





# Turf Replacement Program

- Multi-pronged approach to maximize water utilization and conservation
- Minimum \$2 per square foot of turf removed
  - Commercial: 50,000 square foot rebate maximum (meter per yr)
- Incorporates watershed components to capture runoff
- Additional requirements on [socalwatersmart.com](http://socalwatersmart.com)



[Rebates](#)[Water Savings Incentive Program](#)[Retailer Tools](#)[Contractor Resources](#)[Contact Us](#)

## COMMERCIAL TURF REPLACEMENT

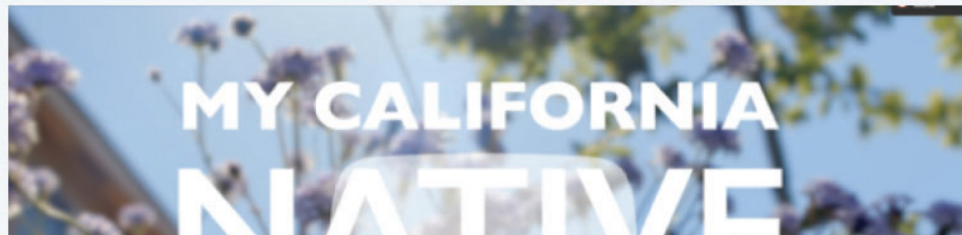
### Program Overview

#### Commercial Turf Replacement

The intent of the Turf Replacement program is to have businesses remove their existing grass and to replace it with organic, drought tolerant landscaping. **Please note, synthetic turf is not an approved conversion option for this program.** Following the success of other incentive programs focusing on landscaping and turf grass removal, the Turf Replacement program aims to combine turf removal, irrigation modification and rainwater retention or filtration to support reuse or soil absorption of rainwater. **Every turf replacement project will include:**

- 3 plants per 100 square feet of area transformed
- A stormwater retention feature
- No hardscape within the transformed area, except permeable hardscape
- Replacement or modification of overhead spray sprinklers

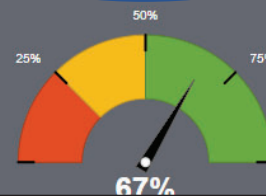
The Turf Replacement Program takes a multi-pronged approach to maximize water utilization and conservation. Removing turf grass is one of the most water conscious adjustments a homeowner can make to reduce their water usage and associated costs. Converting irrigation systems to drip, hand-watering or installing water efficient micro-spray systems or rotating nozzles ensures that landscape watering is as efficient as possible. Finally, the addition of a sustainable approach in the new landscape works to reduce or prevent wasteful runoff through the use of a rainwater capture or filtration system.



#### ESTIMATE YOUR REBATE

Click below to verify eligibility and identify the current rebate amounts for your new water saving device(s) or measure(s). Rebate amounts may vary by water agency and are based on the availability of funding.

Estimate Your Rebate



# Additional Funding May Be Available



# Landscape Training for Professionals

- Water Efficient Landscape Dual Certification Program
  - QWEL
  - CLCA's Water Manager Certification
  - FREE!
  - [www.clca.org/weldcp](http://www.clca.org/weldcp)



**CERTIFICATION WORKSHOPS**  
**FREE! NEW!**

The California Landscape Contractors Association (CLCA) and Metropolitan Water District of Southern California (MWD) have again partnered to bring the landscape professionals of Southern California a one-of-a-kind certification and educational opportunity.

**Become one of the first graduates of this free pilot program!**

- ➔ Become a CLCA Certified Water Manager (CWM)
- ➔ Become a Qualified Water Efficient Landscaper (QWEL)
- ➔ Increase Your Individual and Company Marketability
- ➔ Exclusive Listing as an Irrigation Professional on MWD's Website
- ➔ Earn Double National EPA WaterSense Certification Recognition
- ➔ Earn CEUs for Existing Industry Certifications

Presented virtually in six three-hour classes

Attendance at all six classes and one in-person irrigation audit/written test is mandatory to receive certifications and registration refund. See [clca.org/weldcp](http://clca.org/weldcp)

**Dates: March 16 - April 1, 2021 • 9:30 a.m. - 12:30 p.m.**

Class #1	Tuesday, March 16	Class #4	Thursday, March 25
Class #2	Thursday, March 18	Class #5	Tuesday, March 30
Class #3	Tuesday, March 23	Class #6	Thursday, April 1

Audit/Exam: 2021 Date of Your Choice\* 9 a.m.- 3 p.m.

\*Date for written exam/audit will be selected at a later date. Convenient locations will be chosen based on geography of registered attendees.



**SIGN UP NOW TO ATTEND!**  
[clca.org/weldcp](http://clca.org/weldcp)



# Landscape Training for Professionals

- Model Water Efficient Landscape Ordinance Training
  - Ordinance governs all new and larger rehab landscape projects
  - FREE!
  - [www.clca.org/mwel](http://www.clca.org/mwel)

CALIFORNIA LANDSCAPE CONTRACTORS ASSOCIATION

**MWEL** **What role do you play?**  
Mastering Water Efficient Landscapes  
A Deeper Dive Into Stakeholder Roles

**CERTIFICATE WORKSHOP** Attend this newest MWELO workshop! We'll take a closer look at different Water Efficient Landscape Ordinance compliance and enforcement roles.

 Presented by California Landscape Contractors Association and sponsored by Metropolitan Water District of Southern California 

**Keep informed and add to your MWELO expertise — gain new information and explore a new approach to understanding the ordinance!**  
**Attendees will learn about recent updates and changes to MWELO and have the opportunity to participate in question and answer sessions with subject experts.**

Presented virtually in five 90-minute classes, this workshop will offer CEUs for your current certifications and provide you with a participation certificate.

This workshop is FREE to those in Southern California thanks to a generous sponsorship by the Metropolitan Water District. Attendance at all five classes is mandatory to receive a certificate and registration refund. Visit web page for details.

Winter session starts in January!

**JANUARY 6-20, 2022**  
10-11:30 a.m. via Zoom

Thursday, January 6	Tuesday, January 18
Tuesday, January 11	Thursday, January 20
Thursday, January 13	

**Earn CEUs for your existing APLD, AWWA, IA, ISA, NALP and QWEL certifications!**

**SIGN UP NOW TO ATTEND!**  
Go to [clca.org/mwel](http://clca.org/mwel) for more information and registration



# Water Savings Incentive Program

Gary Tilkian/ Metropolitan Water District

# Metropolitan's CII Rebates and Incentives



- ✓ Irrigation equipment Rebates @ [SocalWaterSmart.com](http://SocalWaterSmart.com)
  - ✓ Turf Replacement
  - ✓ Free Large Landscape Surveys - [BeWaterWise.com](http://BeWaterWise.com)
  - ✓ Landscape Training & Certifications for Professionals
- 
- On-Site Recycled Water Retrofit Program
  - Other Device Rebates
  - Water Savings Incentive Program – Custom, pay-for-Performance Incentives

# Additional CII Incentives

## On-Site Retrofit Program

- Convert potable irrigation & industrial water uses to recycled
- \$195 per acre-foot for five years of estimated water use (up to actual costs)

## Device Rebates available for:

- High-efficiency plumbing fixtures
- HVAC equipment
- Commercial kitchen & food equipment
- Medical & dental equipment

## Innovative Conservation program

- Grant program to test new technologies
- Up to \$50k per grant
- ~2 year cycle



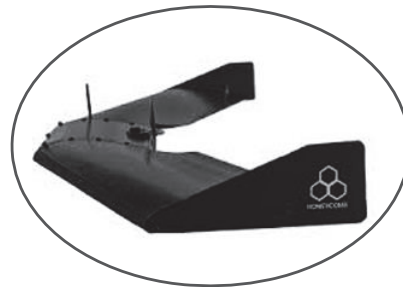
**\$625+**



**\$485+**



**\$200**





# Water Savings Incentive Program (WSIP)

- “Pay for performance program”
- Incentives for non-residential, customized projects:
  - Retrofit existing equipment
  - Improve processes
  - Improve agriculture & landscape irrigation systems
  - Contract for water management services
- Apply online at [socalwatersmart.com](http://socalwatersmart.com)





# Example 1: Large Landscape Project

Project	Replacement & upgrade of entire irrigation system, including “smart” irrigation controllers, drip and high-efficiency sprays, flow sensors, rain sensors, master valves, & lateral lines ~16.6 Acres irrigated area. Project completed ~ Dec 2014
Calculated water savings	355M gallons over 10 years
MWD incentive	\$141,069
Eligible Project Costs	\$780,000



## Example 2: Commercial Project

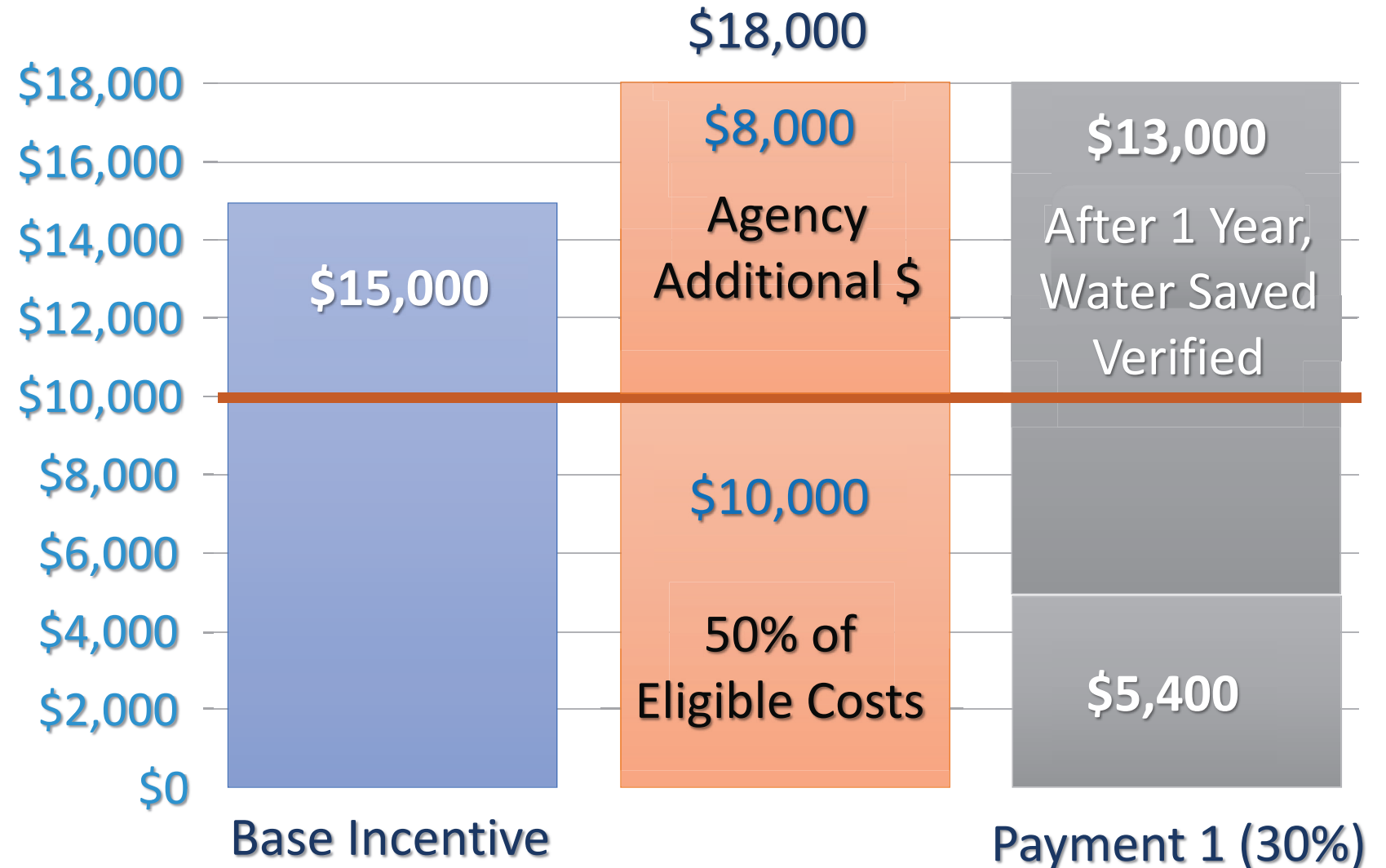
Project	Wholesale plant nursery captures its own irrigation runoff, treats it on-site through natural processes, stores water on-site and re-uses for irrigation. Project completed ~ Oct 2014
Calculated water savings	1,180M gallons over 10 years
MWD incentive	\$357,659 (+ \$100,000 WMWD)
Eligible Project Costs	\$715,317



# WSIP Incentive Calculation Example

SOUTHERN CALIFORNIA  
GOLF & WATER SUMMIT

- Estimated 25M Gal Saved Over 10 Years
- \$20K Project Cost
- Local Agency add'l funding (\$8,000)



Payment 2

# Pure Water Southern California Program

Bruce Chalmers / Metropolitan Water District



# Sustainable Water Use at Golf Courses

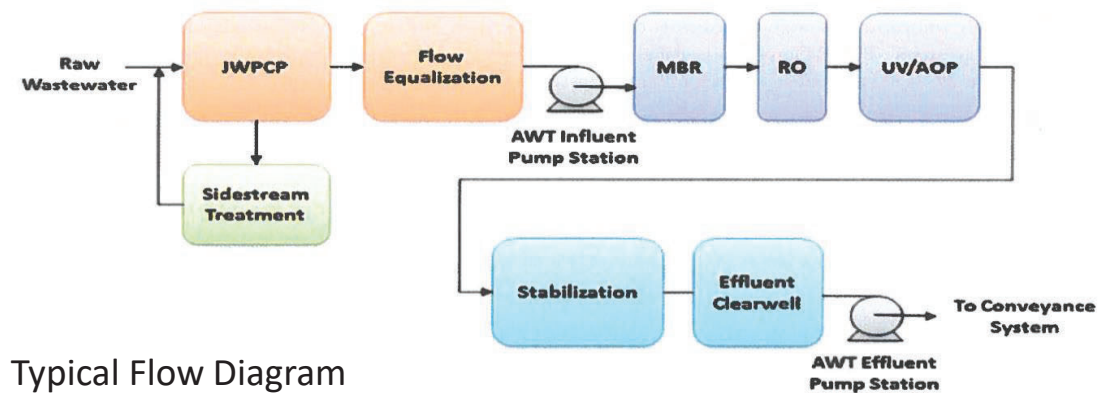
- Golf courses use a great deal of water
- Recycled water is a reliable supply
- Reuse at golf courses
  - 13% nationwide/60% in Orange County CA
  - Mandates/drought, lower cost, sustainable
  - Significant issues using recycled water





# Recycled Water Issues Critical to the Golf Community

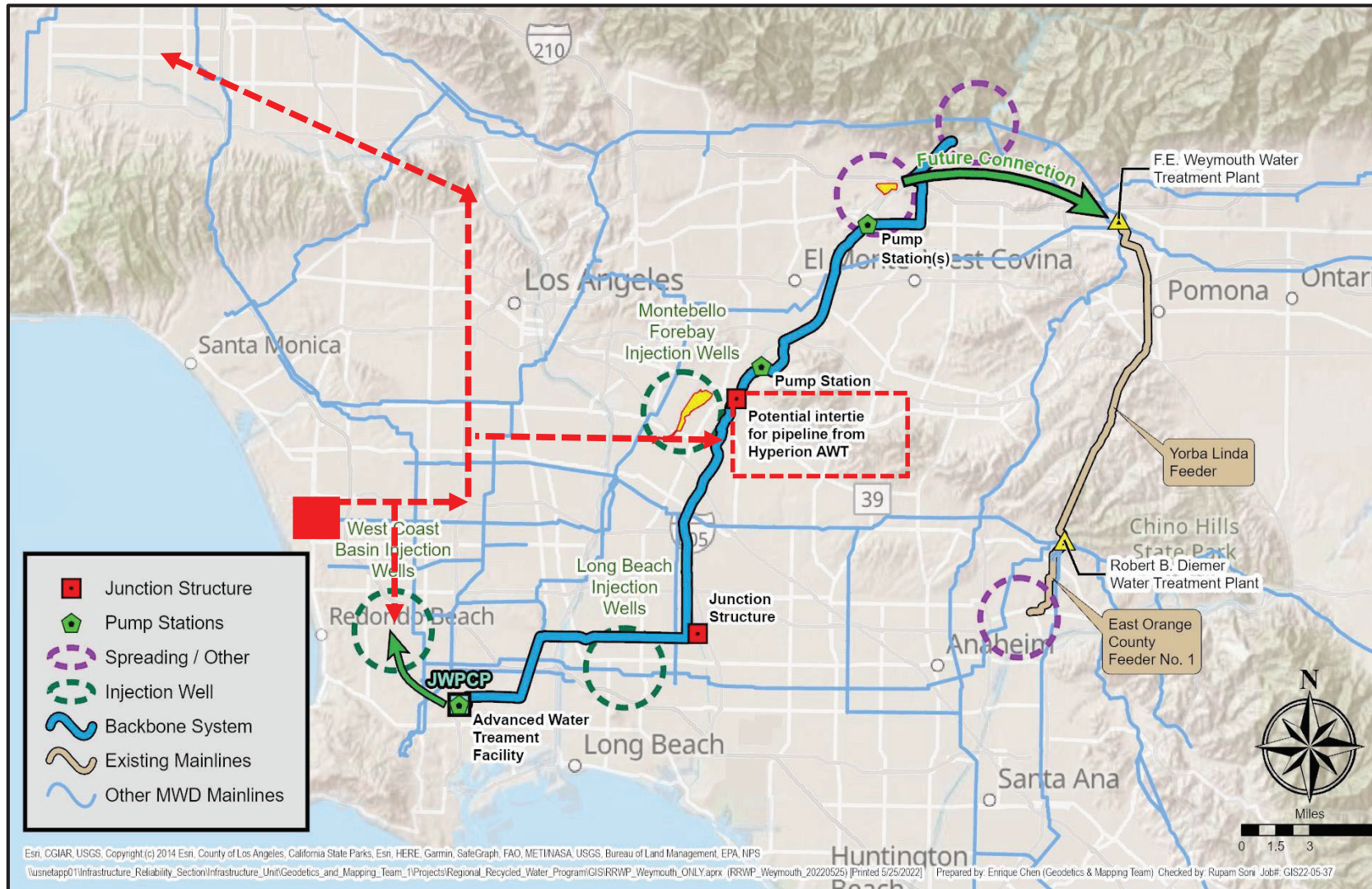
- Water Quality/treatment
- Regional System vs On-site systems
- Availability/storage
- Cost of water
- Residuals management/Permitting



Typical Flow Diagram

AWT Water Quality	Constituent	Target Concentration
	TDS	150 - 400 mg/L
	Chloride/Sulfate	100 mg/L
	Nitrogen	6.4-10 mg/L-N
	Boron	0.5 – 1.0 mg/L

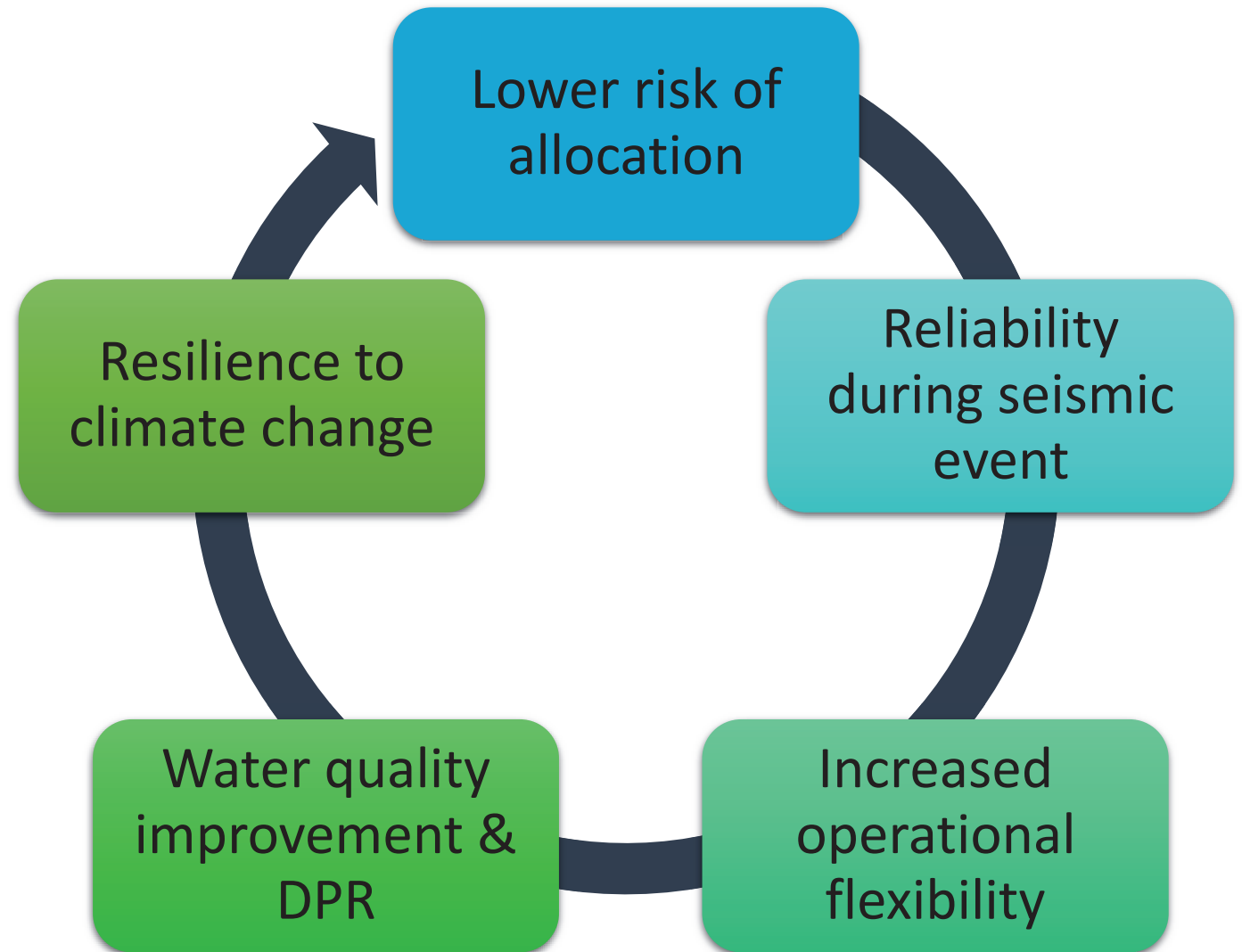
# Program Overview



Phase	Completion
Environmental Planning	2021 – 2024
Early Start Projects	2022 – 2025
Design & Construction	2024 – 2031
Testing and Operation	2031 - 2032

# Resiliency and Reliability

- Resiliency Benefits to the Region from Implementing the Pure Water Southern California Program





# Next Steps/Schedule



- Complete Cost of Service analysis
- Board workshop/discussion on program/rates
- Board action to fund program
- Continue to pursue grants from State and Federal governments
- Incorporate Early Start/Delivery projects

Key Actions	Preliminary Timeframe
Board action to include the RRWP in the CIP	Dec 2022/1 <sup>st</sup> QTR 2023
PM support consultant on-board	1 <sup>st</sup> Quarter 2023
Early delivery water agreements framework	2 <sup>nd</sup> Quarter 2023
Early Delivery/Start design consultants on-board	Mid/Late 2023

# Innovation & ICP Program



Parker Cohn  
CEO, PRM



# INNOVATION

How did you get here?



JACK KRAMER'S

**Los Serranos**

GOLF CLUB

# INNOVATION

SOUTHERN CALIFORNIA  
GOLF & WATER SUMMIT



## *America's "best deal" in an all around family car!*

A beautiful Studebaker sedan... an all-purpose cargo carrier... all in one!  
Brilliant Studebaker power... your choice of two great engines... a V-8 or a 6!

Gas economy team-mate of the '55 Mobilgas Run winner!

Priced right down with the lowest!



**Y**OU'RE driving something really smart when you're the proud owner of this distinctive Studebaker station wagon.

Easy to park—easy to handle—mothers with active youngsters love it for shopping and other errands. Dads find it just right for business use and vacationing. It's a handsome 6-passenger sedan with plenty

of cargo space normally—and 6 full feet of load capacity when you fold up the rear seat.

See your Studebaker dealer for a try-out drive right away... and remember these colorful Studebaker station wagons are priced right down with the lowest. "Best deals" anywhere!

See Studebaker-Packard's TV Reader's Digest—a weekly feature on ABC television network

## STUDEBAKER

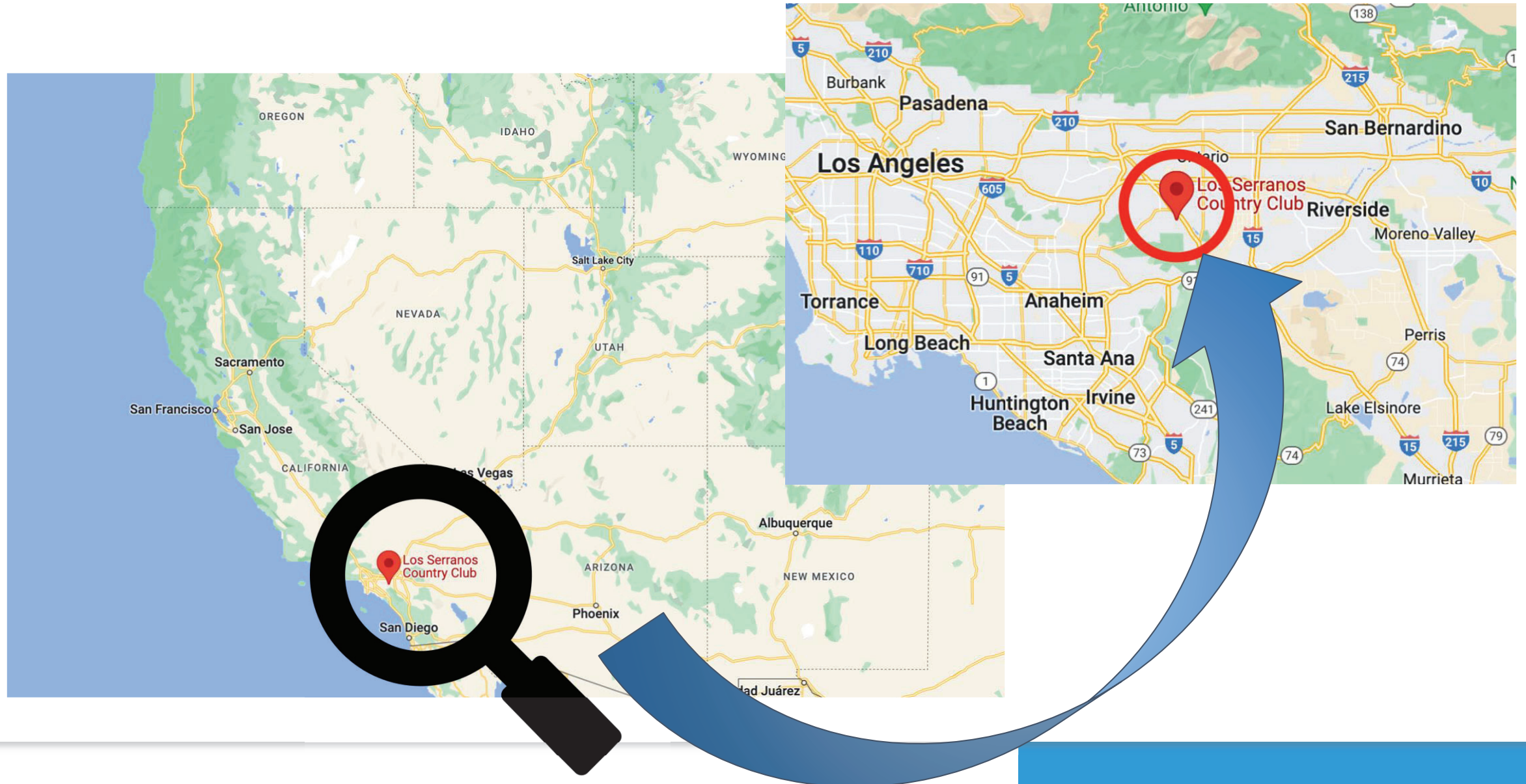
STUDEBAKER DIVISION OF STUDEBAKER-PACKARD CORPORATION... ONE OF THE 4 MAJOR FULL-LINE PRODUCERS OF CARS AND TRUCKS

1955 Studebaker Ad



# WHY INNOVATE?

SOUTHERN CALIFORNIA  
GOLF & WATER SUMMIT





# WHY INNOVATE?

~~Finite Resources~~

~~Growing Population~~

~~Megadrought~~

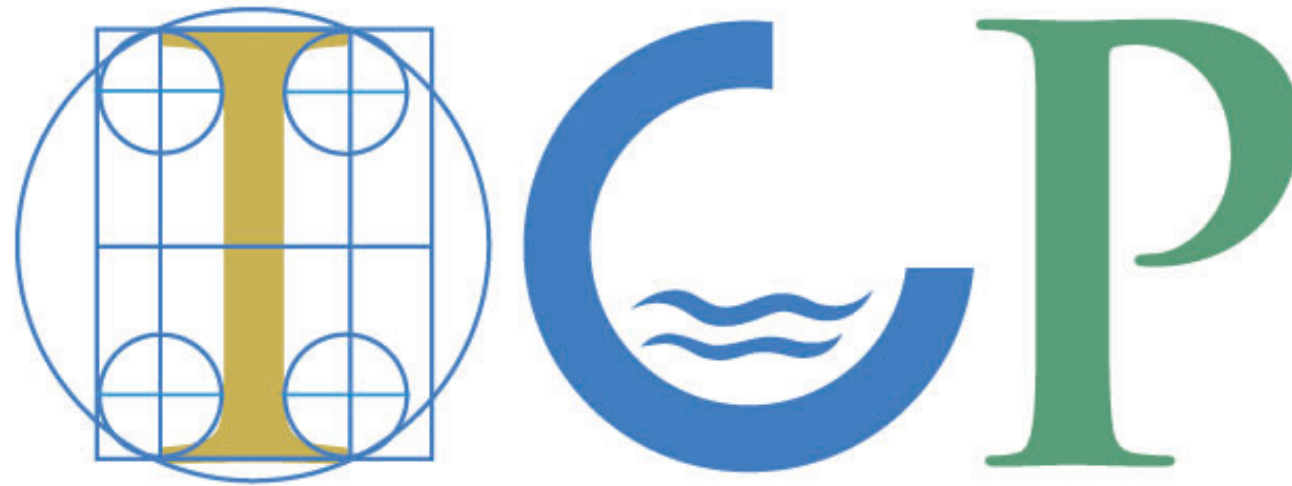
~~500k Acres of Fallow Farmland~~

~~Doom & Gloom~~

Maintain Quality of Life



SOUTHERN CALIFORNIA  
GOLF & WATER SUMMIT



I N N O V A T I V E  
C O N S E R V A T I O N  
P R O G R A M



# OUR INNOVATIVE PROCESS

SOUTHERN CALIFORNIA  
GOLF & WATER SUMMIT





# BEFORE INNOVATION

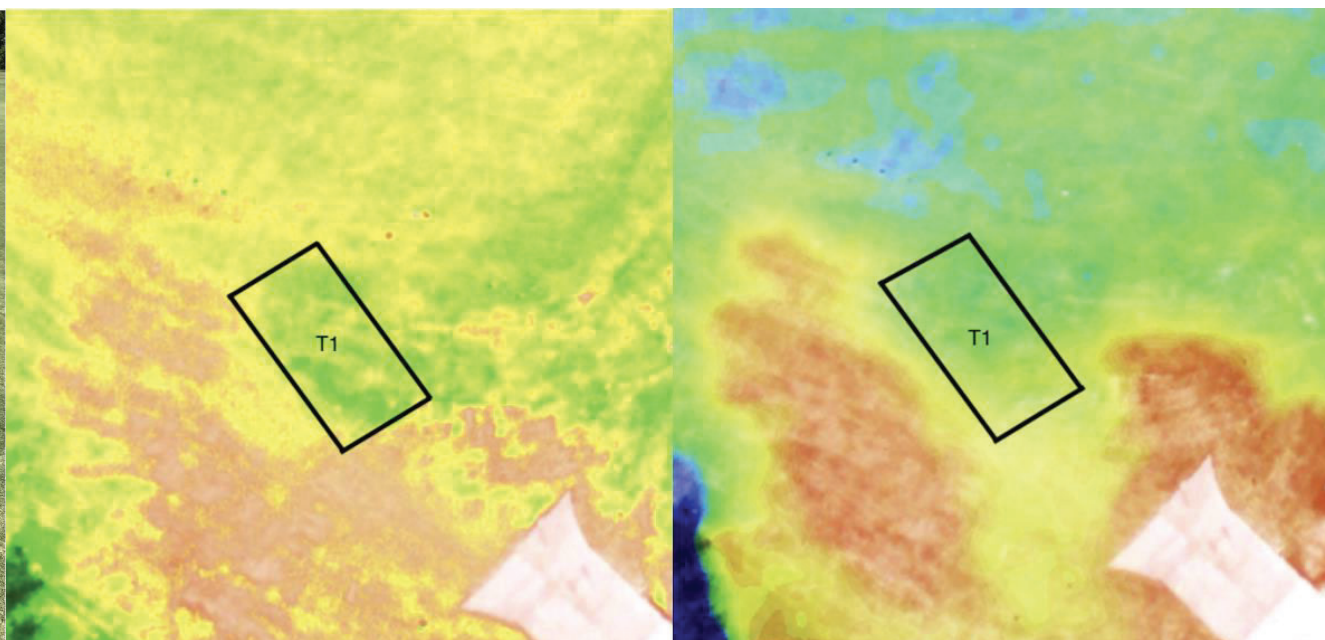
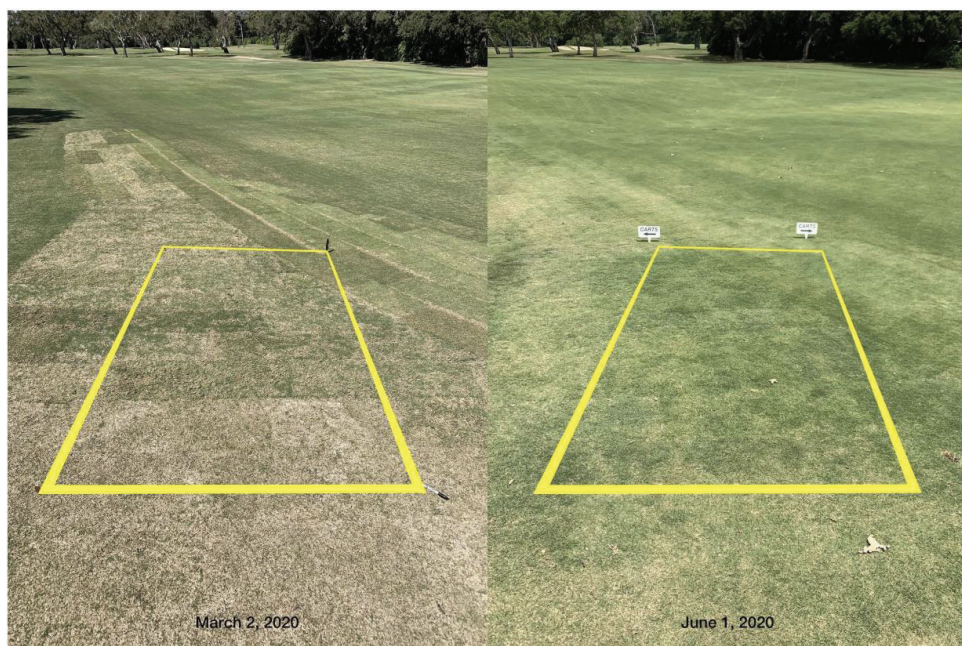
SOUTHERN CALIFORNIA  
GOLF & WATER SUMMIT





# AFTER INNOVATION

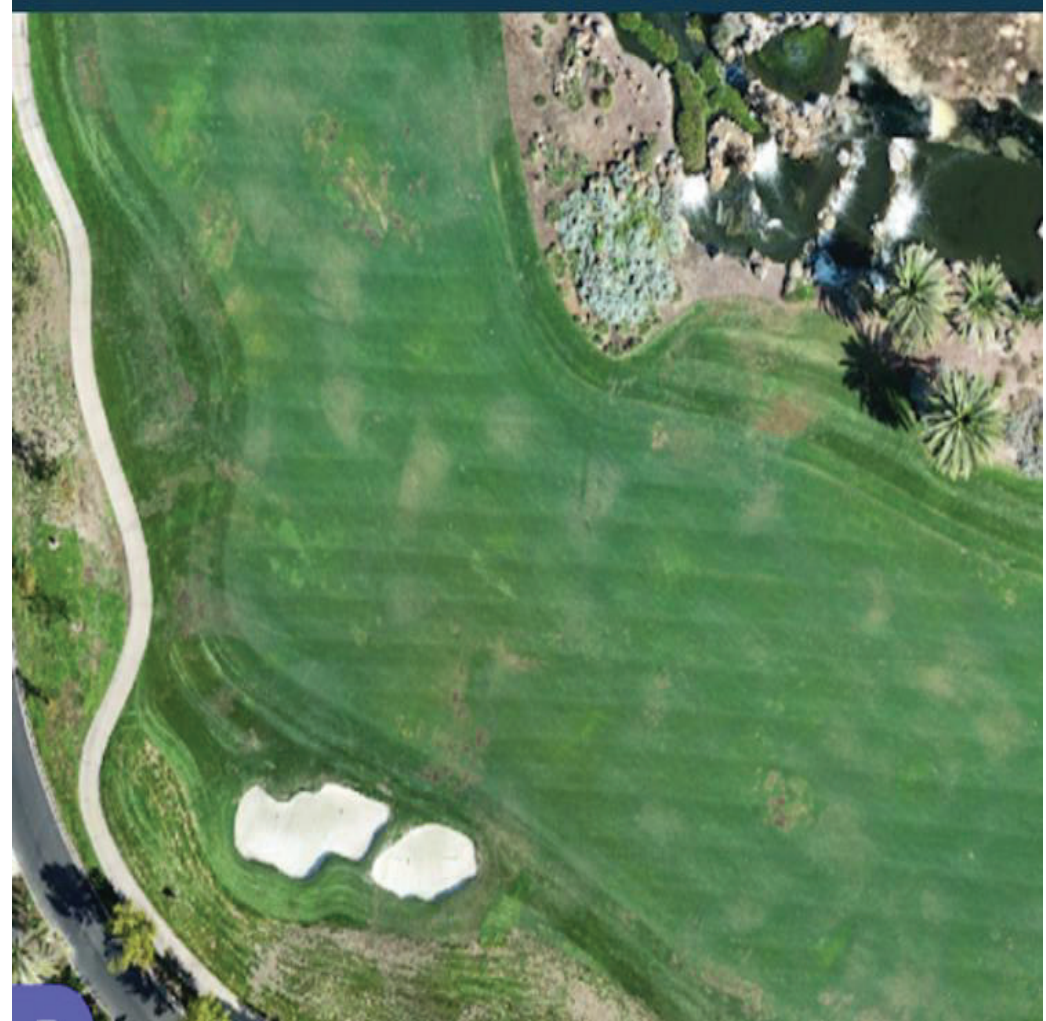
SOUTHERN CALIFORNIA  
GOLF & WATER SUMMIT





# AFTER INNOVATION

SOUTHERN CALIFORNIA  
GOLF & WATER SUMMIT



# AFTER INNOVATION

SOUTHERN CALIFORNIA  
GOLF & WATER SUMMIT

APRIL



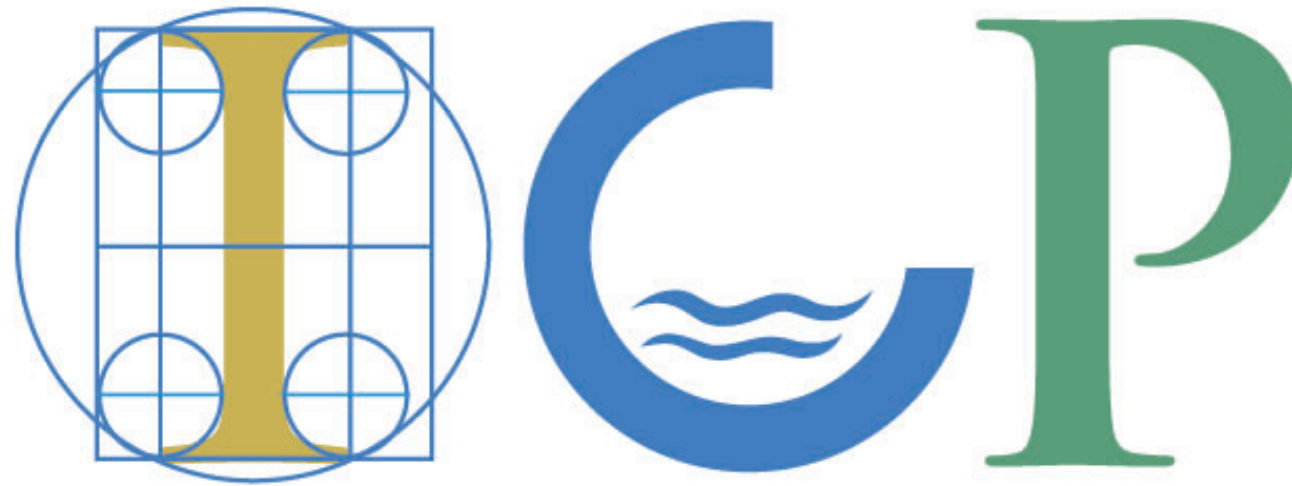
18

JULY



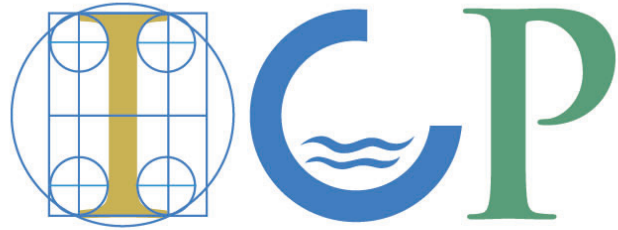


SOUTHERN CALIFORNIA  
GOLF & WATER SUMMIT



I N N O V A T I V E  
C O N S E R V A T I O N  
P R O G R A M





I N N O V A T I V E  
C O N S E R V A T I O N  
P R O G R A M

SOUTHERN CALIFORNIA  
GOLF & WATER SUMMIT

- Request for Proposals: September 19, 2022
- The deadline for proposals is December 15, 2022 at 1:00 PM PST.
- Subject to funding availability, a total of \$275,000 will be awarded to proposals seeking up to \$50,000 through a competitive application process.

# Innovation through Collaboration

**Suresh**  
Moderator

**Krista Guerrero**

MWD

⋮

**Gary Tilkian**

MWD

⋮

**Bruce Chalmers**

MWD

⋮

**Parker Cohn**

PRM

**2:00 pm – 2:40 pm**